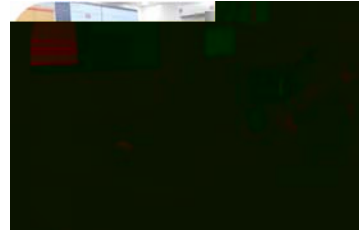




DF1800 Catalogue

Local Data Monitoring System



For Reliable, Secure and Economical Energy System Operation

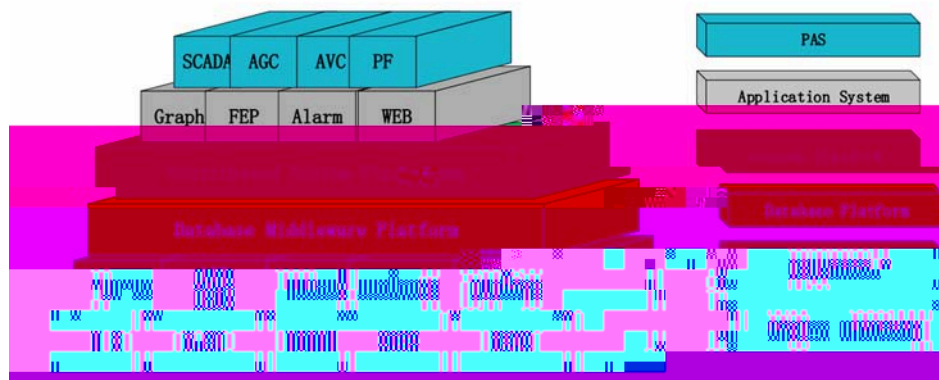
Dongfang Electronics International Engineering Co., Ltd.

Dongfang Electronics Co., Ltd.

Summary

System Hierarchy

DF1800 LDMS software system has four layers in design:



The First: Distributed System Operation and Development Middleware Platform

The Second: Object Oriented Real Time Database Middleware Layer following IEC61970/IEC61968



The Third: Application Platform Layer

The Fourth: Power Application Software Layer

Application Modules

DF1800 SCADA Software Modules

DF1800 Advanced Software Modules



System Features

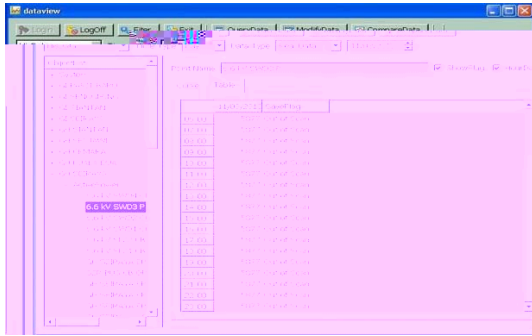
Integrated Hardware/Software Platform



Basic SCADA Modules

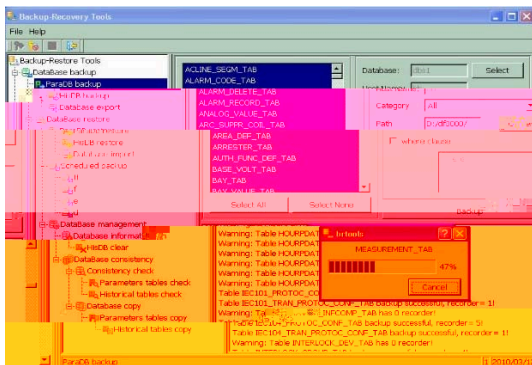
DF1800 SCADA HMI

DF1800 SCADA Database Editor

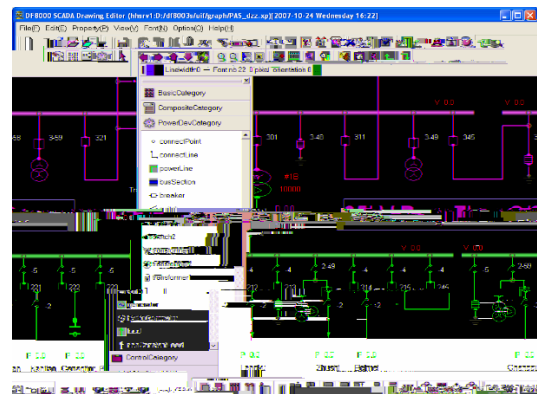
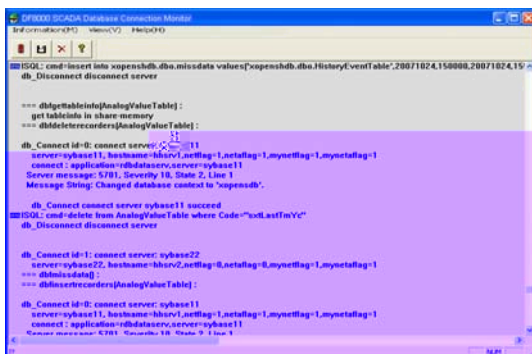


DF1800 SCADA Drawing Editor

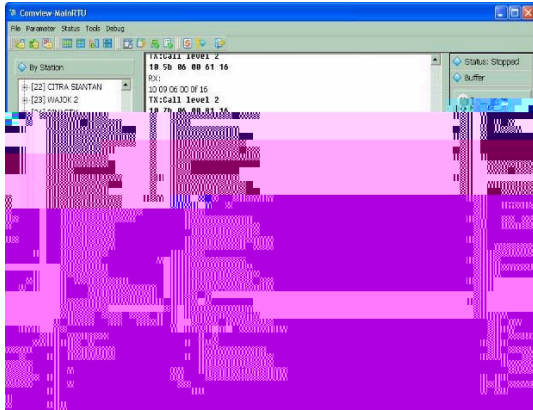
DF1800 SCADA Database Backup Manager



DF1800 SCADA Database Connection Monitor



DF1800 SCADA Front End Viewer



DF1800 SCADA Front End Sever

The screenshot shows the DF1800 SCADA Real Time Alarm Viewer software interface. The main window displays a table of historical events. The table has columns for AFFIRM_STATE, EVENT_LEVEL, EVENT_SORT, EVENT_TYPE, EVENT_TIME, and EVENT_DESC. The events are listed in a table with a red header and a white body. The status bar at the bottom shows the login user, node name, and time.

AFFIRM_STATE	EVENT_LEVEL	EVENT_SORT	EVENT_TYPE	EVENT_TIME	EVENT_DESC
1	Unaffirm	Level_2_Event	SCADA event - BreakerStateChange	2/10-11 08:59:172	PengalukanLine1111Break MinuteOpenT...
2	Unaffirm	Level_5_Event	device & processChannelEvent	2/10-11 07:01:045	PengalukanBackupChannelRunning
3	Unaffirm	Level_3_Event	device & processChannelEvent	10/20-10 05:10:10	PengalukanHeadLine1111Break...
4	Unaffirm	Level_13_Event	device & processChannelEvent	11/24-10 11:23:053	FCSD Alarm from element: value 0.00

DF1800 SCADA Historical Event Viewer

DF1800 SCADA Real Time Alarm Viewer



RTU Historical Event Viewer

147 147 147m 0ms

RTU

Facility	Location	EventType	EventTime	Description	MemberName	Describe	
33	3000	operation event	LoadStation	2007-10-24 14:45:19.200	admin	Min1	Load table
32	3000	operation event	LoadStation	2007-10-24 14:45:19.150	admin	Min1	Load table
31	3000	operation event	LoadStation	2007-10-24 14:45:19.100	admin	Min1	Load table
30	3000	operation event	LoadStation	2007-10-24 14:45:19.050	admin	Min1	Load table
29	3000	operation event	LoadStation	2007-10-24 14:45:19.000	admin	Min1	Load table
28	3000	operation event	LoadStation	2007-10-24 14:45:18.950	admin	Min1	Load table
27	3000	operation event	LoadStation	2007-10-24 14:45:18.900	admin	Min1	Load table
26	3000	operation event	LoadStation	2007-10-24 14:45:18.850	admin	Min1	Load table
25	3000	operation event	LoadStation	2007-10-24 14:45:18.800	admin	Min1	Load table
24	3000	operation event	LoadStation	2007-10-24 14:45:18.750	admin	Min1	Load table
23	3000	operation event	LoadStation	2007-10-24 14:45:18.700	admin	Min1	Load table
22	3000	operation event	LoadStation	2007-10-24 14:45:18.650	admin	Min1	Load table
21	3000	operation event	LoadStation	2007-10-24 14:45:18.600	admin	Min1	Load table
20	3000	operation event	LoadStation	2007-10-24 14:45:18.550	admin	Min1	Load table
19	3000	operation event	LoadStation	2007-10-24 14:45:18.500	admin	Min1	Load table
18	3000	operation event	LoadStation	2007-10-24 14:45:18.450	admin	Min1	Load table
17	3000	operation event	LoadStation	2007-10-24 14:45:18.400	admin	Min1	Load table
16	3000	operation event	LoadStation	2007-10-24 14:45:18.350	admin	Min1	Load table
15	3000	operation event	LoadStation	2007-10-24 14:45:18.300	admin	Min1	Load table
14	3000	operation event	LoadStation	2007-10-24 14:45:18.250	admin	Min1	Load table
13	3000	operation event	LoadStation	2007-10-24 14:45:18.200	admin	Min1	Load table
12	3000	operation event	LoadStation	2007-10-24 14:45:18.150	admin	Min1	Load table
11	3000	operation event	LoadStation	2007-10-24 14:45:18.100	admin	Min1	Load table
10	3000	operation event	LoadStation	2007-10-24 14:45:18.050	admin	Min1	Load table
9	3000	operation event	LoadStation	2007-10-24 14:45:18.000	admin	Min1	Load table
8	3000	operation event	LoadStation	2007-10-24 14:45:17.950	admin	Min1	Load table
7	3000	operation event	LoadStation	2007-10-24 14:45:17.900	admin	Min1	Load table
6	3000	operation event	LoadStation	2007-10-24 14:45:17.850	admin	Min1	Load table
5	3000	operation event	LoadStation	2007-10-24 14:45:17.800	admin	Min1	Load table
4	3000	operation event	LoadStation	2007-10-24 14:45:17.750	admin	Min1	Load table
3	3000	operation event	LoadStation	2007-10-24 14:45:17.700	admin	Min1	Load table
2	3000	operation event	LoadStation	2007-10-24 14:45:17.650	admin	Min1	Load table
1	3000	operation event	LoadStation	2007-10-24 14:45:17.600	admin	Min1	Load table



DF1800 SCADA Report Manager



Advanced Software Modules

DF1800 Web Server

